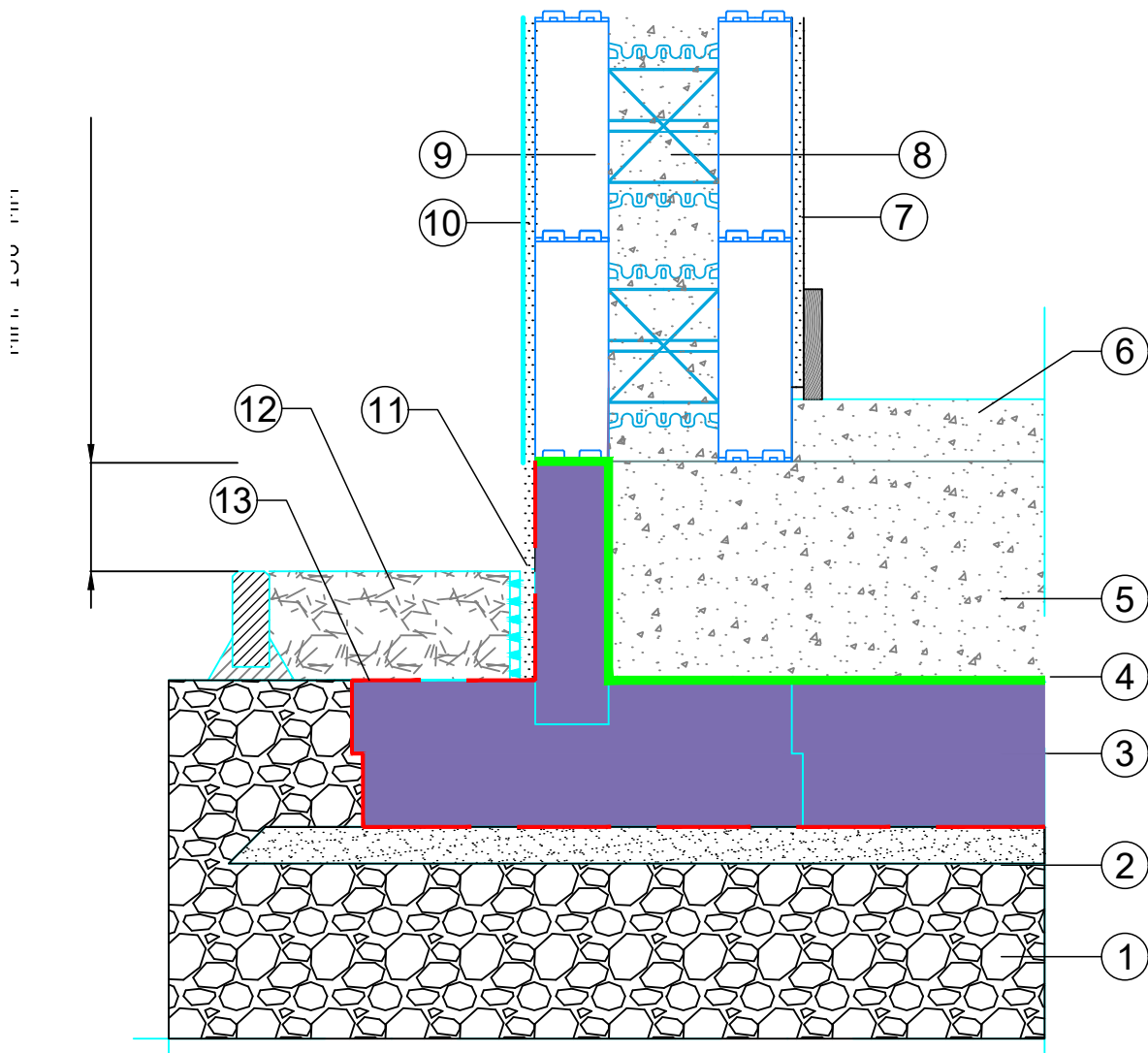


JACKODUR® Atlas



- | | |
|-------------------------------------|--|
| ① MOT Type 1 | ⑦ Plasterboard |
| ② Sharp Sand blinding | ⑧ Concrete core |
| ③ JACKODUR® Atlas | ⑨ THERMOMUR 350 (ICF) |
| ④ DPC | ⑩ Acrylic/Silicone Multicoat Render. Top coat dripbead set at a Min. 150 mm above ground |
| ⑤ Foundation slab ref. Struct. Eng. | ⑪ Acrylic/Silicone waterproof basecoat and dimple sheet |
| ⑥ Screed | ⑫ Filter gravel 16/32 mm |
| | ⑬ Radon Barrier |

Scale: 1:10

Jackodur Atlas
Junction Details

JK-A-08 Thermomur 350 Radon

JACKON
by BEW/

Drawn By: MAJ

Date: Nov-22