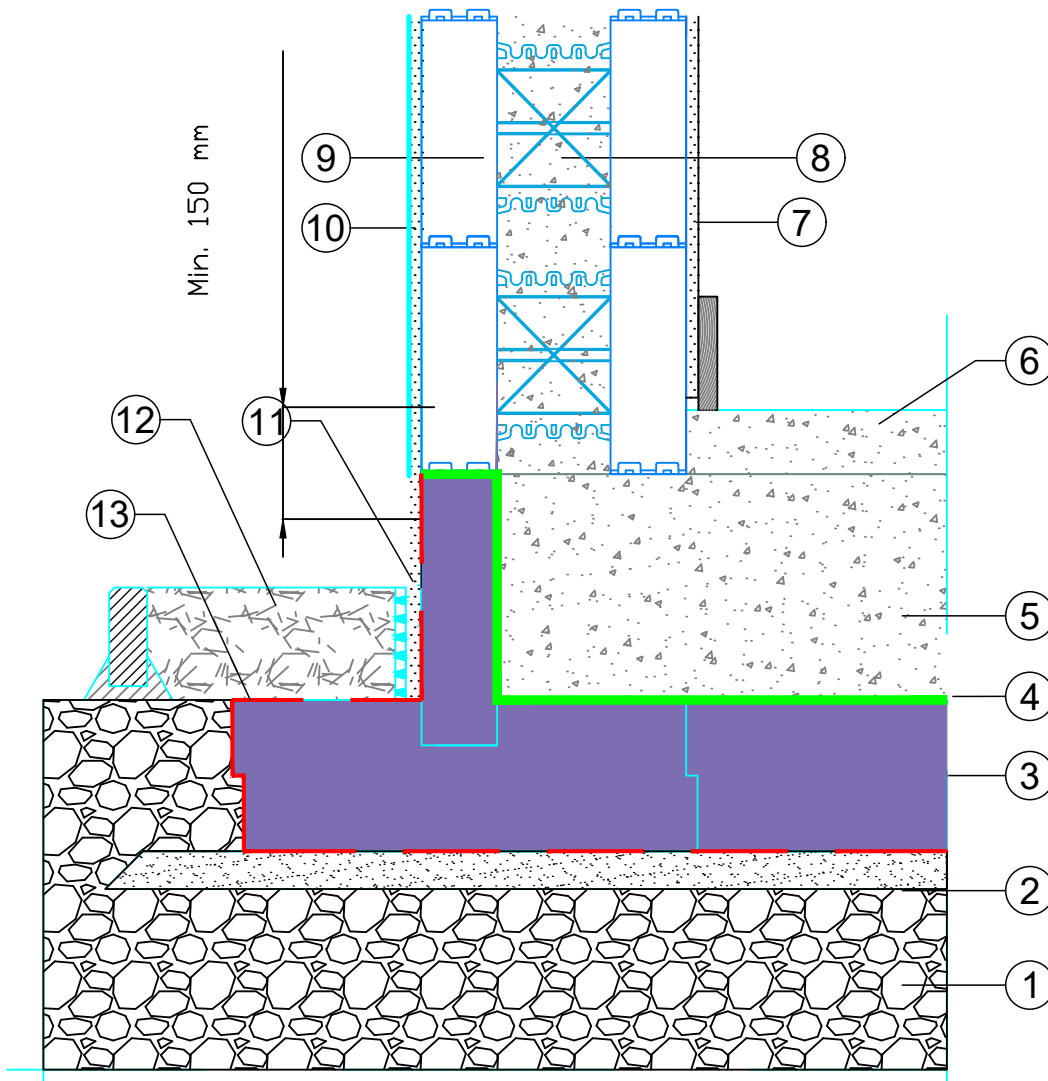


# JACKODUR® Atlas



- |                                     |  |
|-------------------------------------|--|
| ① MOT Type 1                        | ⑦ Plasterboard   |
| ② Sharp Sand blinding               | ⑧ Concrete core  |
| ③ JACKODUR® Atlas                   | ⑨ THERMOMUR 350 (ICF)  |
| ④ DPC                               | ⑩ Acrylic/Silicone Multicoat Render. Top coat dripbead set at a Min. 150 mm above ground |
| ⑤ Foundation slab ref. Struct. Eng. | ⑪ Acrylic/Silicone waterproof basecoat and dimple sheet                                  |
| ⑥ Screed                            | ⑫ Filter gravel 16/32 mm   |
|                                     | ⑬ Radon Barrier  |

JK-A-08 Rev:A Scale: 1:10

Jackodur Atlas

Junction Details

Thermomur 350: Radon

Drawn By: MAJ

Date: Aug 20