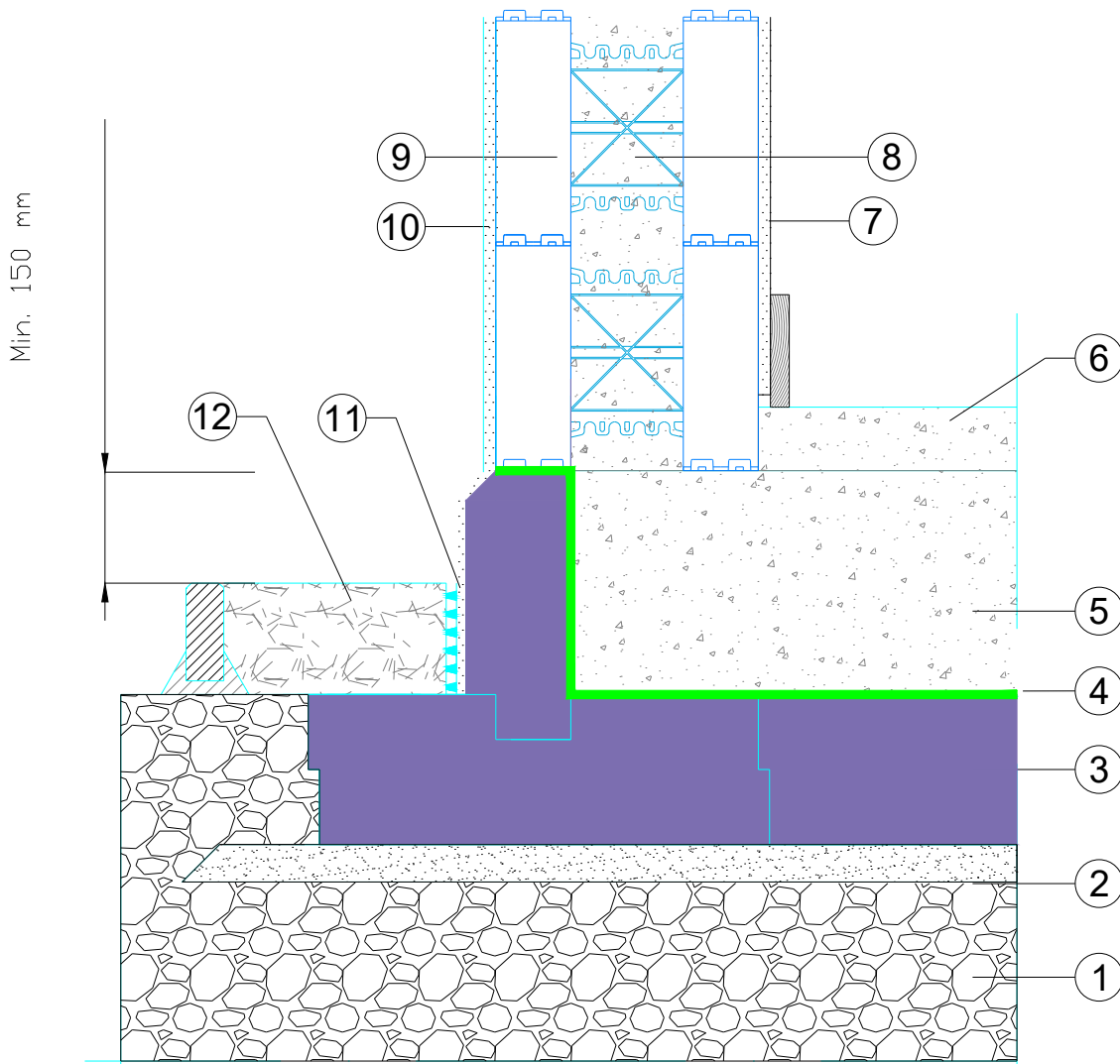


# JACKODUR® Atlas



- |                                     |  |
|-------------------------------------|--|
| ① MOT Type 1                        | ⑦ Plasterboard   |
| ② Sharp Sand blinding               | ⑧ Concrete core  |
| ③ JACKODUR® Atlas                   | ⑨ THERMOMUR 350 (ICF)  |
| ④ DPC                               | ⑩ Acrylic/Silicone Multicoat Render. Top coat dripbead set at a Min. 150 mm above ground |
| ⑤ Foundation slab ref. Struct. Eng. | ⑪ Acrylic/Silicone waterproof basecoat and dimple sheet                                  |
| ⑥ Screed                            | ⑫ Filter gravel 16/32 mm   |

Scale: 1:10

**Jackodur Atlas**  
Junction Details

JK-A-03c Thermomur 350-140mm w-chamf

**JACKON**  
by BEW/

Drawn By: MAJ

Date: Nov-22